

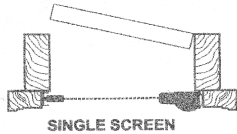
1 REMOVE KIT PARTS FROM SHIPPING TUBE

				<ul style="list-style-type: none"> 15 Mounting screws 1 Housing end cap screw 2 Handles 1 Housing end cap 1 Bushing 1 Pull bar end cap 2 Recess mount clips 1 Rail brush separator (See Figure 1)
1 Housing with pull bar and magnet (3 3/16" x 1 7/16")	1 Side Rail with Magnet (1 1/8" x 9/16")	1 Top Rail (1 3/16" x 7/8")	1 Bottom Rail (5/8" x 7/8")	1 Accessory Kit

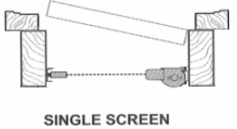


**Accessory Kit
Figure 1**

Typical installation on an in-swing door.



Typical installation on an out-swing door.



TOOLS NEEDED

Measuring tape

Power drill w/Phillips head **or** Phillips head screwdriver

Soft mallet

Needle nose pliers

Pencil

Chop Saw (recommended) **or** Hack saw w/miter box

A chop saw with an 80-tooth blade suitable for aluminum is the preferred cutting tool.

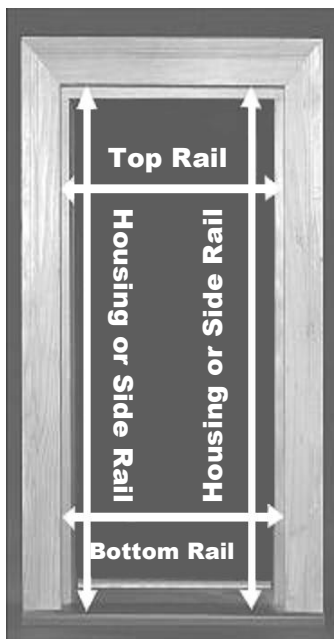


Figure 2

2 MEASURING FOR YOUR SCREEN

The housing should always be installed on the hinged side of the door. See **Figure 2** for measuring guidelines.

	Measurement		Deduction		Cut to this size
Housing		-	3/8"	=	
Side Rail		-	No Deduction	=	
Top Rail		-	2"	=	
Bottom Rail		-	2"	=	

3 CUTTING YOUR SCREEN

3a. CUTTING THE HOUSING

The housing has been partially assembled and will have one end cap already on it. Measure from that end (marked with a “**Measure From This End**” label seen in **Figure 3a-1**) and mark the housing at the **CUT TO THIS SIZE** measurement on page 1.

Before you cut the housing, be sure that the screen fabric and pull bar **DO NOT** extend past the housing end (see **Figure 3a-2**). You may now cut the housing.

3b. CUTTING THE RAILS

Measure the side rail and mark it at the **CUT TO THIS SIZE** measurement on page 1. You may now cut the side rail.

Measure the top rail and mark it at the **CUT TO THIS SIZE** measurement on page 1. You may now cut the top rail.

Measure the bottom rail and mark it at the **CUT TO THIS SIZE** measurement on page 1. You may now cut the bot-



Figure 3a-1

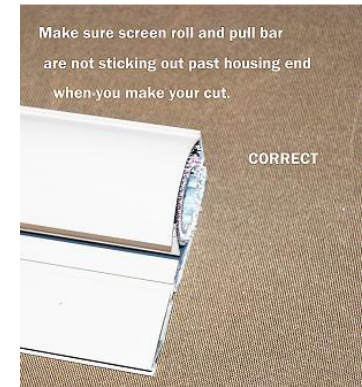


Figure 3a-2

4 INSTALLING THE ACCESSORIES

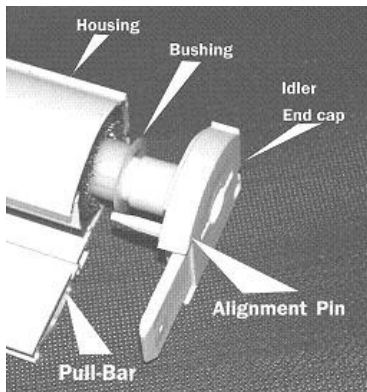


Figure 4a

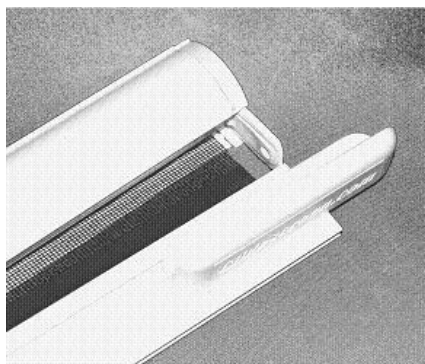


Figure 4b

CAUTION

DO NOT OVER-TIGHTEN SCREWS— All screws included are stainless steel for use in all climates. Over-tightening may break the screw.

4a. HOUSING END CAP

Place the white **bushing** inside the screen fabric tube, making sure that the ridge on the bushing lines up between two of the ridges inside the tube, then insert the **housing end cap** into the housing (see **Figure 4a**).

Gently tap the end cap onto the housing and secure with the **housing end cap screw** (*this will be the smallest screw in the accessory kit and the only one with a flat head*).

4b. INSTALLING THE HANDLES

Slide the **handles** down the track on either side of the pull bar (see **Figure 4b**). You may gently tap them to get them started (if it fits too tightly, it can help to use a silicone spray on the back of the handle). The handles can be adjusted to the desired height at any time during or after the installation.

4c. INSTALLING THE PULL BAR END CAP

Insert the **pull bar end cap** into the end of the pull bar and gently tap into place.

5 MOUNTING YOUR GLIDE SCREEN

5a. MOUNTING THE HOUSING

Attach the two **recess mount clips** to the hinged side of the door with two of the mounting screws (**see Figure 5a**). The clips should be mounted at equal distances (about 12-15") from the top and bottom of the door with the longer side of the clip away from the door.

Lock the Housing onto the clips by inserting the backside first and then rotating the housing toward the front (**see Figure 5a**).

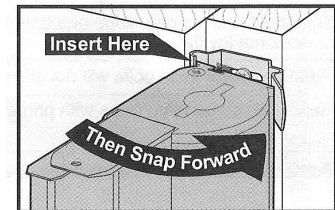
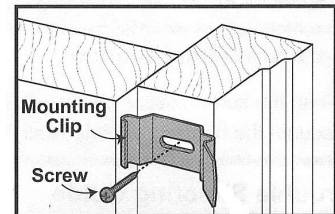


Figure 5a

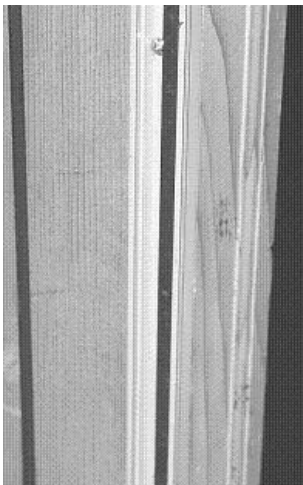


Figure 5b

5b. MOUNTING THE SIDE RAIL

Drill four 1/8" holes evenly spaced in the groove of the **side rail** and secure with screws (**see Figure 5b**).



Figure 5c

5c. MOUNTING THE TOP RAIL

Use the **rail brush separator** to part the insect brush and drill two 1/8" holes evenly spaced in the base of the **top rail**. Insert the rail into the tab on the top housing end cap and secure with screws (**see Figure 5c**). Both the top and bottom rails have a **decorative trim groove** on one side. This groove should always face outward (away from the door).

5d. MOUNTING THE BOTTOM RAIL

Use the **rail brush separator** to part the insect brush and drill three 1/8" holes evenly spaced in the base of the **bottom rail**. Insert the rail into the tab on the bottom housing end cap and secure with screws.

Congratulations! Your Glide Screen is now installed and ready to use.

CAUTION!

This is not a safety or security screen. This product will not stop a child from falling, provide security, or protect your belongings. Please use eye protection when cutting and installing your screen. If you have any problems or question, please call us on our toll free number listed below.

TROUBLESHOOTING GUIDE

<p>IT IS DIFFICULT TO PULL THE RETRACTABLE SCREEN ACROSS THE OPENING OR THE RETRACTABLE SCREEN SEEMS TO BOUNCE AS IT OPENS & CLOSES.</p>	<p>Check the top and bottom guides for screws that may not have been driven flush into the guides causing the screen to drag.</p> <p>Clean any debris from inside the bottom guide.</p> <p>Adjust the number of turns on the Spring mechanism. The more Spring tension the more resistance. To do this, unscrew the end cap with the spring mechanism, and gently pull the end cap out. To increase the tension, turn the end cap clockwise; to decrease the tension, turn the end cap counter clockwise (note: Quick Fit screens are set at 10 turns).</p> <p>Make sure that the Housing has a 90° cut. If not, trim so it is a straight cut.</p> <p>Check to insure that both Housing End Cap Bushings, are fully inserted inside Screen Tube. A bouncing effect is a sign that one or more Bushings may not be correctly installed.</p> <p>Check to see if the Pull Bar is rubbing and needs to be trimmed down.</p> <p>Check to see that the Plastic Pull Bar End Cap is gliding on the glide rails within the bottom rail track and NOT underneath the glide rails within the screw chamber.</p>
<p>THE RETRACTABLE SCREEN BINDS OR WILL NOT RETRACT INTO THE HOUSING PROPERLY.</p>	<p>See above steps.</p> <p>Check to see if the insect pile is moving or binding in the top or Bottom Rails. Crimp ends to prevent movement.</p> <p>Make sure that the screen fabric has a clean cut and is not jagged; if so, trim so it is a straight cut.</p> <p>Check to see if either the housing or inner tube have been twisted, bent or otherwise damaged during shipping.</p>
<p>INSECT PILE MOVES IN THE TOP OR BOTTOM RAILS.</p>	<p>Ends of the insect pile and aluminum track need to be crimped together to prevent movement.</p>
<p>SCREEN HANDLES HIT OR RUB ON DOOR HARDWARE.</p>	<p>Raise or lower the handle so that it no longer strikes the door hardware.</p>
<p>SCREEN FALLS OUT OF TOP GUIDE.</p>	<p>Height measurements may be off. If the unit was cut too short, shim up along bottom. Pull Bar may be cut too short. Check measurements and consult the cutting instructions.</p> <p>Check to see if the floor is level and that the opening is square; apply shims as needed.</p>
<p>THE DOOR BOTTOM THRESHHOLD HAS A STEEP SLOPE CAUSING THE RETRACTABLE SCREEN BOTTOM GUIDE TO BE ON AN ANGLE WHEN MOUNTED.</p>	<p>The Bottom guide should always be as level as possible. Use wedge shims to adjust and for support until the Bottom Rail is level.</p>
<p>SCREEN IS TORN OR DAMAGED.</p>	<p>Replace the mesh using a screen refill kit.</p>
<p>THE MAGNETICS OF THE SCREEN DO NOT FULLY SEAL OR, THE SCREEN DOES NOT CLOSE EVENLY.</p>	<p>Clean the magnets using a mild soap and water.</p> <p>Clean any debris from inside the bottom guide. When not properly maintained, debris can accumulate and interfere with the operation of the screen as well as the screens closing and seal capabilities.</p>

If you are having a problem that is not covered by the troubleshooting guide, are missing parts, or have damaged parts, please call us at the toll free number listed below.

Warranty

Limited Lifetime Warranty

All Glide Screen Parts except screen fabric are warranted for as long as the original purchaser owns the product. Screen fabric is warranted for one year from date of purchase. This warranty applies to the product being used under normal residential use conditions and does not include the cost of labor. Glide Screen will replace all defective parts with new parts supplied by the manufacturer. This product is not covered for damage caused by abuse or negligence by the product owner.

All warranted parts will be shipped in the same manner as the original purchase. If the original purchase was sent out UPS ground, the parts will be shipped out at Glide Screens expense. If parts are damaged during shipping, the responsibility is assumed by the shipper providing their shipping and packing requirements have been met.

Dealer installation warranty may vary in each state and is normally required by state consumer protection laws. Check with the state you are installing in.



Retractable Screen Care and Use

Opening the Screen: Use the handle to pull the screen across the opening until the magnetic strips meet and latch the screen in the open position. Maintaining the adjustable handle height at approximately 36" from the floor will help to ensure the best operation of the screen.

Closing the Screen: To close the screen you must first release the magnet seal. Do this by placing your thumb on the magnetic profile while grasping the handle and then pull the handle toward you. For double door systems, pull one handle toward you while pushing the other away (again while using the thumb on the opposing handle for leverage). This will separate the magnetic seal. Now simply allow the screen to retract into the protective housing. Do not attempt to push the screen closed; the screen will retract by itself. Doing so may cause the screen fabric to misalign and lead to damage.

Use:

- Fully retract the screen mesh into the cassette housing when the screen is not in use or, in inclement weather or especially in windy weather conditions.
- If misalignment of the screen mesh occurs (caused by such events such as a person walking into the screen, etc.), make certain to assist the screen mesh in aligning within the top and bottom guide rails before using the screen.
- If you get a fold in the screen mesh, immediately straighten the mesh and the fold will typically iron itself out quickly. If the fold is allowed to remain then the screen mesh will eventually split.

Care: Your retractable screen will provide you years of use by following a few simple guidelines.

- Regularly vacuum the bottom track to keep it clear of debris, especially next to the magnetic profile. It is also possible to clean the bottom track by washing it thoroughly with a garden hose. Allow the piling to dry before using the screen.
- Clean the screen mesh by lightly going over it with a vacuum cleaner brush attachment and/or wipe it with mild, soapy water. Allow the screen mesh dry completely before closing/retracting.
- To clean the frame of dirt and hand oil, use mild soapy water or, a gentle multi-purpose cleaner.

Enjoy your Retractable Screen!